

## Optimized voyage planning with Navmaster ECDIS

**MeteoGroup's Ship Performance Optimisation System (SPOS) together with Navmaster ECDIS enables you to optimize your route, save time and fuel, reduce CO2 emissions and finalise a voyage plan based on accurate ETAs whilst keeping crew, ship and cargo safe.**

The combined SPOS and ECDIS service is designed to be quick and efficient to use in order to help captains fully optimise their voyage planning. Navmaster ECDIS uses the UKHO's standard E-Navigator XML file format, so that existing SPOS customers can integrate with PC Maritime's ECDIS.

### How does the combination benefit the ship?

The navigating officer can create a route in Navmaster ECDIS and load it into SPOS for optimization. He can take into account weather limits, speed profile, bunker profile, voyage speed, fixed ETA, track types and delays. He can then create the optimum route (both in terms of safety and efficiency) for the ship in the prevailing conditions.

He can choose how often the route needs to be optimised in SPOS and, if the route needs to be adjusted owing to the weather conditions, exchanging the route between Navmaster and SPOS is straightforward.

### How easy is it to optimise a route?

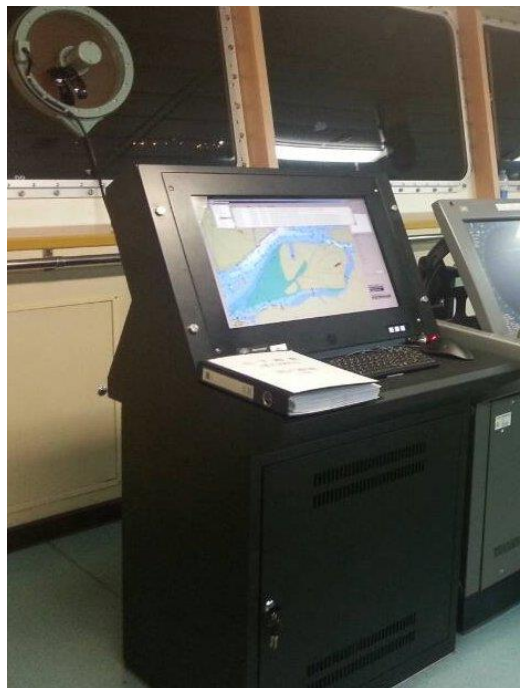
These are the simple steps you need to take:

Create a route in Navmaster ECDIS and export it, choosing the E-Navigator XML format option, to a folder where SPOS can find it

- Import the route in SPOS
  - Use the functionality of SPOS to get a user-defined optimisation
  - Calculate weather route optimisations and select the optimised route to start a voyage
  - Import the updated route back to Navmaster
- Open the route in Navmaster and re-check it for safe navigation

### Updating in SPOS

- Select *Update Voyage* and let SPOS recalculate your optimum route, including great circle, rhumb line and composite route options
- Select the route you find appropriate and finish your voyage update
- Import the updated route into Navmaster ECDIS and perform navigation checks as before



Import/Export	
Route format:	<div style="border: 1px solid #ccc; padding: 2px;"> <div style="background-color: #f0f0f0; padding: 2px;">SPOS</div> <div style="border-top: 1px solid #ccc; padding: 2px;">           SPOS            RT3  <span style="background-color: #0070c0; color: white; padding: 2px;">NAVMASTER</span> </div> </div>