

# Navmaster® ECDIS 900



Navmaster ECDIS is an established Electronic Chart Display and Information System, incorporating the input of many navigators and Type-approved to the latest IMO standards.

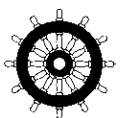
Designed to deliver clear functionality and ease of use in a familiar MS Windows environment, Navmaster ECDIS provides for traditional navigation skills in a modern software application. The ECDIS hardware elements are well-suited for installation on newbuilds and simple to retrofit into existing bridge layouts.



## > KEY BENEFITS

- > EASY CHART INSTALL & UPDATING
- > INSTANT CHART DRAWING
- > FULL COMPLIANCE WITH NMEA & CONNECTIVITY TO BRIDGE NETWORK SYSTEMS
- > UNIVERSAL ROUTE FORMAT - TO SHARE ROUTES BETWEEN DIFFERENT ECDIS/OFFICE PCS
- > ADMIRALTY AIO, TOTALTIDE, NAVTEX & AUTOPILOT COMPATIBLE
- > VOYAGE DATA REPLAY FOR INCIDENT ANALYSIS & TRAINING
- > REMOTE DIAGNOSTICS
- > MODULAR HARDWARE FOR EASY INSTALLATION/MAINTENANCE
- > TYPE-SPECIFIC TRAINING & CERTIFICATION ONBOARD OR ASHORE\*
- > RADAR IMAGE OVERLAY\*
- > PAY AS YOU SAIL\*
- > SINGLE ECDIS CAN BE UPGRADED TO DUAL VIA NETWORK CABLE

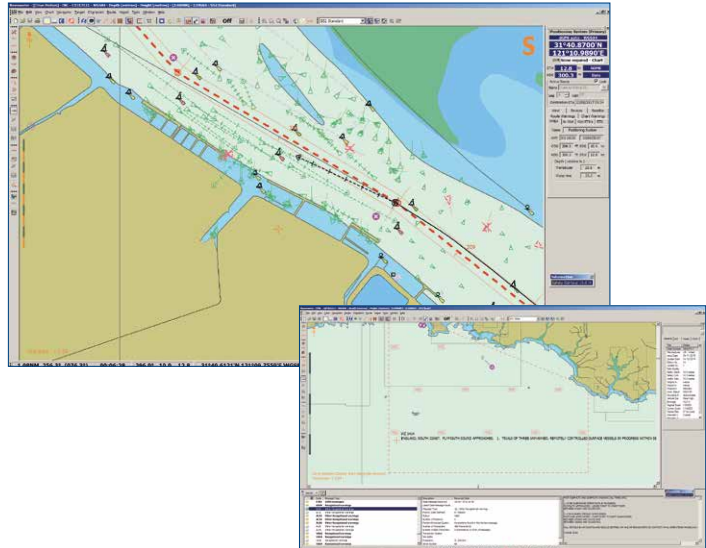
Items marked \*are options



## > REAL-TIME ROUTE MONITORING

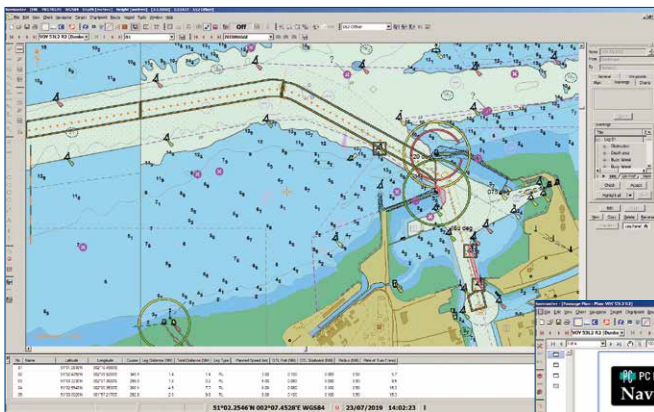
Navmaster ECDIS automatically displays primary and secondary position and provides vital voyage information including:

- > Data from all interfaced sensors
- > ARPA & AIS target data
- > Heading indicator & forward prediction
- > Scaled ship outline
- > Warnings & alarms: anti-grounding, safety contours, off-track, wheelover, critical point etc
- > Automatic logbook plus manual entry
- > Navigator's toolkit for drawing lines, points, areas on charts with text
- > Manual fixing & event recording
- > Logs & Chart Status Report
- > UKHO AIO & TotalTide integrated
- > AIO implementation includes route-checking against both T&P Notices to Mariners and ENC-specific NTMs

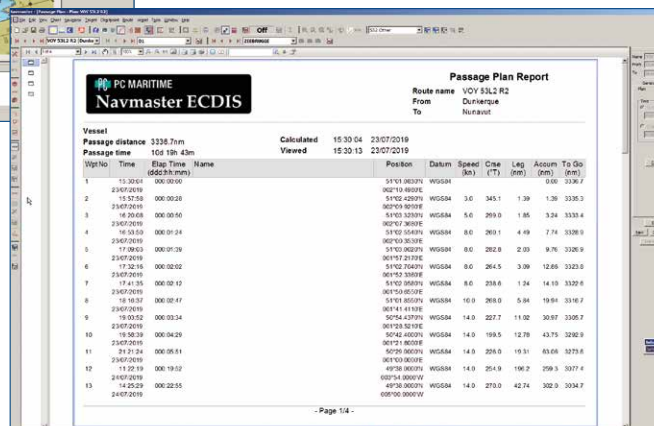


## > ROUTE PLANNING

Navmaster's route planning is powerful and flexible. The resulting passage plan report can be used to conform to the ISM Code and to Company quality requirements.



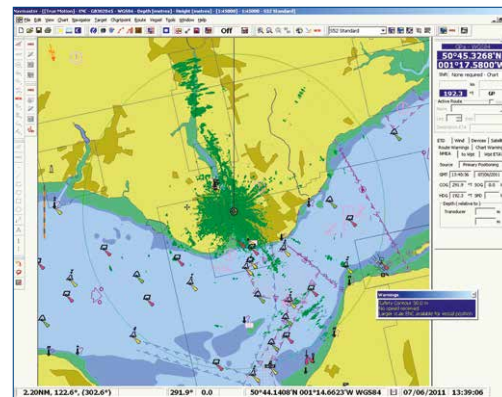
- > Separate wpt & route databases for efficient planning
- > Notes can be stored for each wpt & transferred to routes
- > View Navtex information relevant to passage
- > Detailed passage plan includes instructions & notes
- > Passage plans can be emailed to head offices



## > ARPA & RADAR IMAGE

ARPA targets are continuously monitored with additional data shown in the side panel.

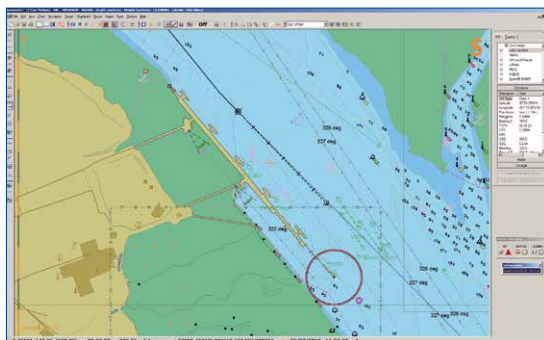
- > Supports over 1000 ARPA targets
- > Automatic storage of target data
- > Commands are quickly accessible from toolbar
- > GoTo target button when target is not on current chart
- > Supports target association with AIS
- > Radar image overlay option via ASTERIX protocol



## > AIS

Combined with ARPA, AIS provides the navigator with a comprehensive presentation of the traffic situation.

- > Unlimited AIS targets
- > Information filtered between Static, Dynamic and Voyage data
- > Quick View button to display text labels
- > All targets accessible in side panel
- > Easy upload of Own Ship voyage data to AIS receiver



## > VOYAGE DATA RECORD & PLAYBACK

Navmaster supports the latest VDR standards as well as providing its own VDR NMEA recording feature that automatically captures all own and other vessel NMEA data without crew action and stores the data compressed, enabling voyages to be reconstructed.

This provides vital evidence in the event of an incident, helps to resolve insurance claims and offers a trial manoeuvre and training tool. To play back voyages on another PC requires an office-based Navmaster installation.

- > Unlimited data capture period (default 90 days)
- > Playback in real time, speeded up or slowed down
- > User-defined auto-delete interval
- > ECDIS features are fully operational in playback



VOYAGES CAN BE REPLAYED FOR ANALYSIS AND FOR TRAINING.

## > TRAINING & CERTIFICATION

- > A COMPLETE DVD COURSE THAT TRAINS, TESTS AND CERTIFIES CREWS – WITHOUT LEAVING SHIP. PLEASE ASK FOR SEPARATE BROCHURE.



## > MODULAR HARDWARE

All components (processor, displays, trackball, keyboard, break-out box) are type-approved individually and as part of Navmaster ECDIS. Modular components offer flexibility at installation and easier maintenance.

The separate break-out box makes it simple to disconnect any single component and attach a substitute, in the event of a problem. There are no hidden extras – Navmaster ECDIS is shipped ready for installation.



INTERFACE BOX GROUPING ALL NMEA IN/OUT PORTS INTO A SINGLE UNIT, EXTERNAL TO THE ECDIS. EASY TO UNPLUG CONNECTIONS IN EVENT OF REPLACEMENT. PROVIDES 8 X NMEA0183 INPUTS, 4 X NMEA OUTPUTS. 191 X 71 X 29MM, WEIGHT 0.18KG.



INTEL I5 QUAD-CORE, 4GB RAM, 80GB SOLID-STATE HARD DRIVE, DUAL MONITOR SUPPORT. CERTIFIED TO IEC60945. 2 X USB2.0, 4 X USB3.0, 2U 19" RACK-MOUNT CASE WITH BRACKETS. 433W (EXCL BRACKETS), 483W (INC. BRACKETS) X 400D X 88H, WEIGHT 9.9KG.



24" TFT WIDESCREEN DISPLAY, WITH GLASS DISPLAY CONTROL, LED BACKLIGHT TECHNOLOGY, FULL DIMMING AND MULTIPOWER. CERTIFIED TO IEC60945. BRACKETS AVAILABLE FOR DESKTOP/CONSOLE MOUNTING. 593 X 384 X 70MM, WEIGHT 10.1 KG.

**PEDESTAL AVAILABLE**  
PLEASE CONTACT US FOR DETAILS.



19" HIGH-QUALITY TFT DISPLAY, SLEEK DESIGN, LED BACKLIGHT TECHNOLOGY, FULL DIMMING. CERTIFIED TO IEC60945. CONSOLE-READY. BRACKETS AVAILABLE FOR DESKTOP/DECKHEAD MOUNTING. 429 X 382 X 74.5MM, WEIGHT 8.2KG.

## > AFTERCARE AND SERVICE

We aim to provide customers with first-class support and to build long-term relationships. Promptness of support keeps the ship operational and can significantly reduce running costs.

We can project-manage installation at a location of your choice and we offer:

- > Upgrade & maintenance contract for regulatory compliance
- > Knowledgeable PC Maritime staff & dealers
- > Remote Diagnostics for efficient problem-solving
- > Direct access to ECDIS for trouble-shooting (requires Internet)
- > 18 month hardware warranty
- > E-chart supply & updating – PC Maritime is a Chart Agent for UKHO, C-Map, Primar and all official chart manufacturers

## > E-CHARTS

> COMPATIBLE WITH ENC, C-MAP CAES, C-MAP PRO/PRO+ & ARCS

### PC MARITIME

PC Maritime Ltd  
Unit 3 Bowker House, Lee Mill  
Ivybridge PL21 9EF, UK.

Tel: +44 (0)1752 254205  
email: enquiries@pcmaritime.com

[www.pcmaritime.com](http://www.pcmaritime.com)

PC Maritime thanks its customers **Kuwait Oil Tanker Company, China Shipping Company, BOURBON** and **Transocean** for the pictures used on the front page.



PC MARITIME HAS A RECORD OF FIRSTS IN MARINE SOFTWARE DEVELOPMENT AND HAS WON FOUR GOVERNMENT SMART AWARDS, ONE SPUR AWARD AND THE SEATRADE AWARD FOR SAFETY AT SEA. PC MARITIME IS AN INDEPENDENT BRITISH COMPANY.

INTELLIGENT NAVIGATION SOLUTIONS